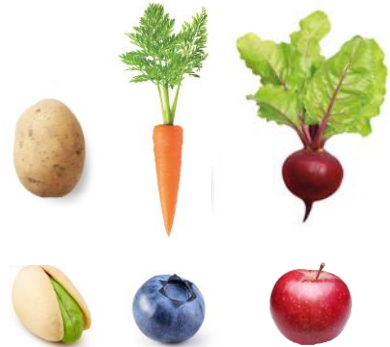
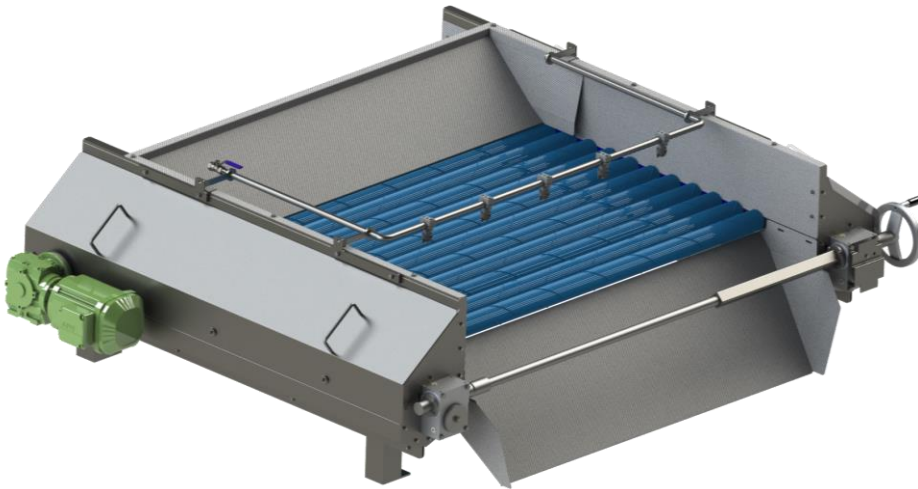




SLIVER REMOVER – SR2

For sorting small & thin pieces of products on size like:



DESCRIPTION SLIVER REMOVER – SR2

This machine is specially designed for sorting out small products. The most important features of this machine is the fact that the opening between the rollers is adjustable during processing and the quality of sorting is extremely high. The range of adjustability of the rollers is 20 mm.

All rollers have the same rotation direction and are provided with food quality rollers and food quality spirals. This creates a good movement and a nice overall spreading of the product which is important for a good sorting result. The product is transported over the rollers to the outfeed, a process done carefully to ensure that the product isn't damaged at all. Due to the good overall spreading of the product, our Sliver Remover is also perfect to use as the infeed for a belt optical sorter since the product will be fed to the belt optical sorter nicely spread.

Furthermore, the replacement of parts during maintenance is easy accessible by the practical and quick to disassemble design, resulting in a very short downtime and lower maintenance costs.

Waste is collected and can be removed underneath the machine. For spraying off sticky parts, the machine is provided with a spraying pipe over the rollers.

The grader is available in several dimensions and the adjustment can also be executed with a servo-drive. Lastly, the rollers can, optionally, also be executed in AISI 304 Stainless Steel.

Advantages:

- Rollers and spirals are Food – Grade and standard in colour blue.
- Rollers and spirals in crème colour can be delivered upon request.
- Best sorting result, biggest sorting surface
- Adjustable sorting sizes during production
- Easy to clean
- Minimum of wearable parts
- Highest quality, accuracy and capacity



SLIVER REMOVER – SR2

TYPE	SR2 10/750	SR2 14/1000	SR2 14/1500	SR2 14/2000
CAPACITY	Up to 2500 kg/hr*	Up to 3500 kg/hr*	Up to 5000 kg/hr*	Up to 7000 kg/hr*
PRODUCT INFEED	Continuously	Continuously	Continuously	Continuously
DIMENSIONS	1250 x 1470 x 550 mm	1540 x 1720 x 550 mm	1540 x 2220 x 550 mm	1540 x 2720 x 550 mm
SORTING SIZE	3–23 mm OR 4-24 mm	3–23 mm OR 4-24 mm	3–23 mm OR 4-24 mm	3–23 mm OR 4-24 mm
AMOUNT OF ROLLS	10	14	14	14
LENGTH OF ROLLERS	750 mm	1000 mm	1500 mm	2000 mm
INSTALLED POWER	2,2 kW, 400V, 50/60 Hz	2,2 kW, 400V, 50/60 Hz	2,2 kW, 400V, 50/60 Hz	2,2 kW, 400V, 50/60 Hz
MATERIALS	AISI 304 Stainless Steel, glass blasted. Drive components and other parts are made of normal material. Rollers out of Food-Approved plastics.	AISI 304 Stainless Steel, glass blasted. Drive components and other parts are made of normal material. Rollers out of Food-Approved plastics.	AISI 304 Stainless Steel, glass blasted. Drive components and other parts are made of normal material. Rollers out of Food-Approved plastics.	AISI 304 Stainless Steel, glass blasted. Drive components and other parts are made of normal material. Rollers out of Food-Approved plastics.

* Depending on the type of product, specifications and infeed

TYPE	SR2 18/1000	SR2 18/1500	SR2 18/2000	SR2 24/1500	SR2 24/2000
CAPACITY	Up to 7000 kg/hr*	Up to 6000 kg/hr*	Up to 8000 kg/hr*	Up to 7000 kg/hr*	Up to 10.000 kg/hr*
PRODUCT INFEED	Continuously	Continuously	Continuously	Continuously	Continuously
DIMENSIONS	1870 x 1720 x 550 mm	1870 x 2220 x 550 mm	1870 x 2720 x 550 mm	2320 x 2220 x 750 mm	2320 x 2720 x 550 mm
SORTING SIZE	3–23 mm OR 4-24 mm	3–23 mm OR 4-24 mm	3–23 mm OR 4-24 mm	3–23 mm OR 4-24 mm	3–23 mm OR 4-24 mm
AMOUNT OF ROLLS	18	18	18	24	24
LENGTH OF ROLLERS	1000 mm	1500 mm	2000 mm	1500 mm	2000 mm
INSTALLED POWER	2,2 kW, 400V, 50/60 Hz	2,2 kW, 400V, 50/60 Hz	2,2 kW, 400V, 50/60 Hz	2,2 kW, 400V, 50/60 Hz	2,2 kW, 400V, 50/60 Hz
MATERIALS	AISI 304 Stainless Steel, glass blasted. Drive components and other parts are made of normal material. Rollers out of Food-Approved plastics.	AISI 304 Stainless Steel, glass blasted. Drive components and other parts are made of normal material. Rollers out of Food-Approved plastics.	AISI 304 Stainless Steel, glass blasted. Drive components and other parts are made of normal material. Rollers out of Food-Approved plastics.	AISI 304 Stainless Steel, glass blasted. Drive components and other parts are made of normal material. Rollers out of Food-Approved plastics.	AISI 304 Stainless Steel, glass blasted. Drive components and other parts are made of normal material. Rollers out of Food-Approved plastics.

* Depending on the type of product, specifications and infeed